



Pullman Public Schools

2020 Bond and Levy Information

Pullman Public Schools • 240 SE Dexter Street • Pullman, WA 99163 • 509-332-3581

Why are Quality Schools Important?

For our **STUDENTS**, a higher level of education leads to:

- Higher likelihood of employment
- Higher wages when employed
- Improved physical and mental health
- Increased civic participation (active and productive citizens)

Quality schools:

- Promote curiosity, creativity, innovation, and a growth-mindset
- Provide safe and secure learning environments that foster optimal development of children and families

For our **COMMUNITY**, quality schools are a **PRUDENT INVESTMENT**.

Quality schools:

- Provide resources and support for children and their families
- Impact business recruitment
- Increase property values
- Are an important part of economic development
- Provide for a larger tax base
- Lead to lower rates of poverty and unemployment



**Investing in Our
Schools**

Kamiak Elementary School: \$23.5 million
2016 = New Construction



Jefferson Elementary School: \$1.4 million
2015 = 4 Additional Classrooms



Pullman High School and Franklin Elementary School: \$53.5 million
2013 = Renovation/Construction of PHS plus 6 New Classrooms at FES



**We are VERY GRATEFUL for
all of the support that the Pullman
Community has provided over the years.**



Photo Courtesy of Pullman Chamber of Commerce

Pullman Public Schools Funding Sources

2019-2020

- 2,761 Students
- 361+ Staff Members

Federal 5%

Local 14%

State 81%

2019-2020 Budget



Video

What is a SCHOOL LEVY?

Levy for Learning

A **levy** is a **local property tax** passed by voters that generates revenue for the **operations** of school districts to ensure our students have access to staff, programs, and course offerings to be successful.



What is a school BOND?

Bond for Building

A **bond** is a **local property tax** passed by voters that generates revenue for the **construction and renovation of school facilities** for the growing student population.

What is the difference between a **LEVY** and a **BOND**?



Levy for Learning

For enrichment: maintenance and operations, technology, additional staffing, and programs to supplement state funding

Paid for in 2 – 4 years

The money is collected annually for the life of the levy once approved by voters

Requires **50% +1** voter approval

Voters pay for levy based on assessed value of property owned

Bond for Building

For construction of school facilities

Typically paid over 20+ years

The School District receives all money upfront to pay for construction/facility improvement costs once approved by voters

Requires **60+%** voter approval

Voters pay for bond based on assessed value of property owned

Why do we have a LEVY?

A **LEVY** helps **BRIDGE THE GAP IN FUNDING** between what the state pays and the actual cost of operating our schools.

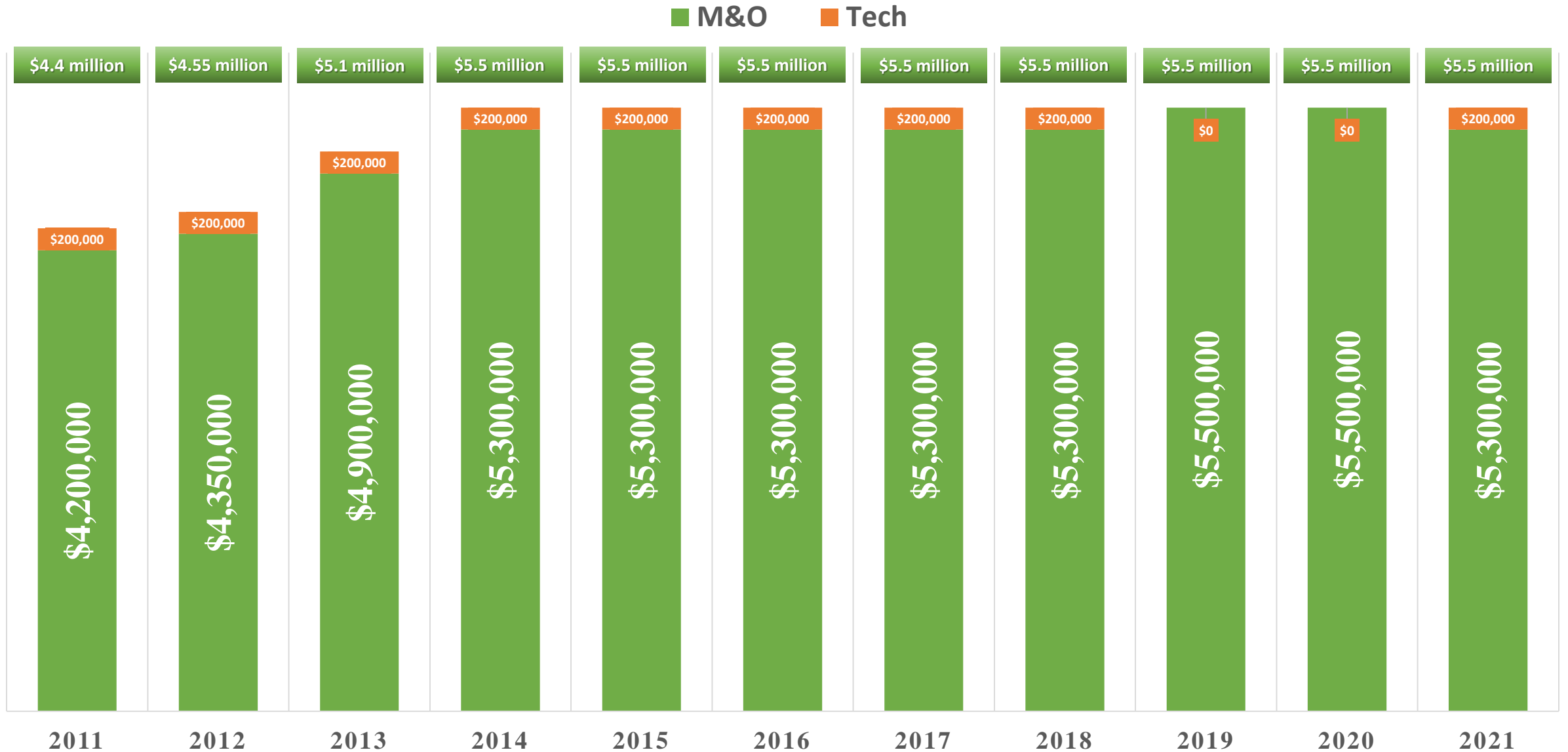


Levies bring our schools to life!

- Activities and Athletics
- Arts and Drama
- Counselors
- Libraries
- Music
- Professional Development
- Safety and Security
- Small Class Sizes
- Social Emotional Learning
- Teachers and Staff
- Technology
- Nursing Services
- Transportation



History of Enrichment Levy



The proposed **Enrichment** and **Technology** Levy **REPLACES** the current Maintenance and Operations Levy

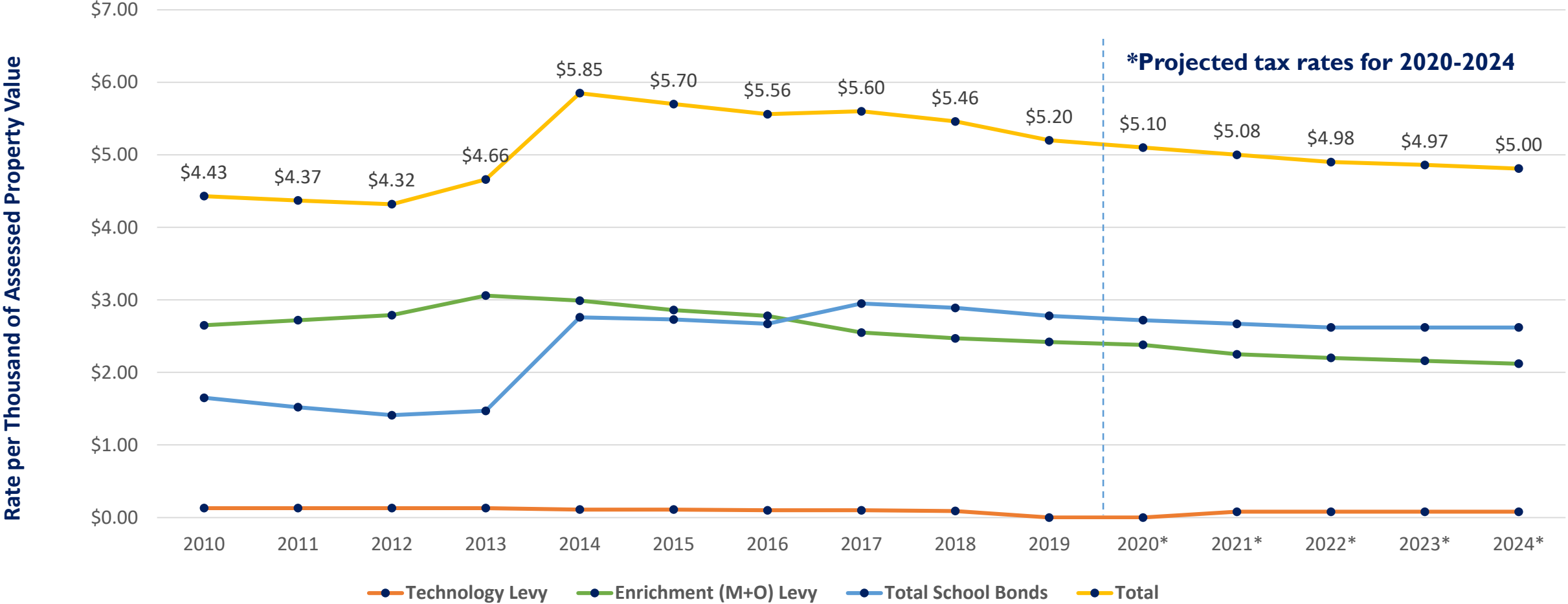
The District is asking voters to consider **REPLACING** our existing 4-year expiring levy with a new 4-year levy.

LEVY COLLECTION RATE PER \$1,000

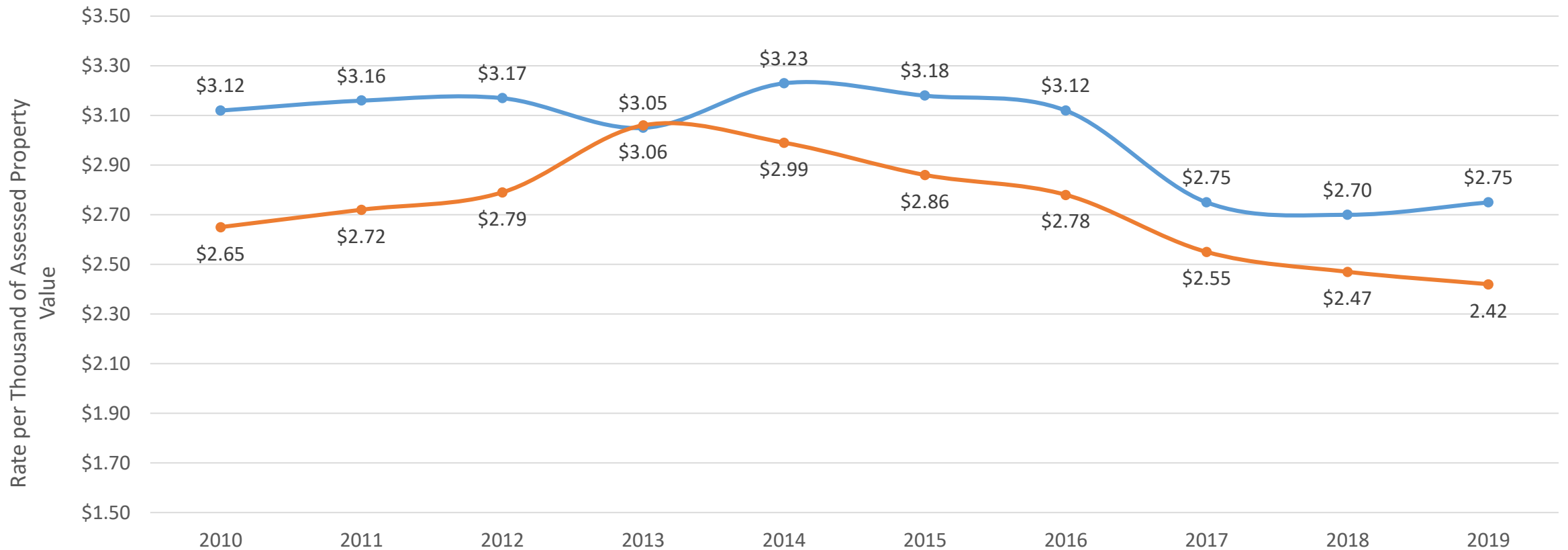
■ Enrichment/M+O Levy ■ Technology Levy



Tax Rate Trends and Projections



History of Enrichment Levy



 **Approved Rate**

 **Actual Rate**

Technology Levy

The Technology Levy is \$200,000 each year from 2021 to 2024.

- Computer Technology
- Technology System Updates
- Enhanced Infrastructure
- Software and Online Applications
- Updated Hardware



Why do we have a BOND?

A BOND helps **FUND SAFE AND QUALITY LEARNING FACILITIES.**



Bonds help protect the investment the community has made in our schools.

Capital Projects Advisory Committee

A committee of community members and Lincoln Middle School staff representatives carefully reviewed feedback from the community to identify needs and priorities.

The committee also studied district finances to determine the bond amount and term that would least impact taxpayers.



Capital Projects Advisory Committee Recommendations

Recommendations include:

1. Provide adequate funds for the renovation and expansion of Lincoln Middle School to:
 - relieve overcrowding
 - upgrade safety/security
 - meet projected enrollment needs
2. Provide adequate funds for cooling system additions (HVAC upgrades) to improve health and safety at:
 - Franklin Elementary School
 - Jefferson Elementary School
 - Sunnyside Elementary School



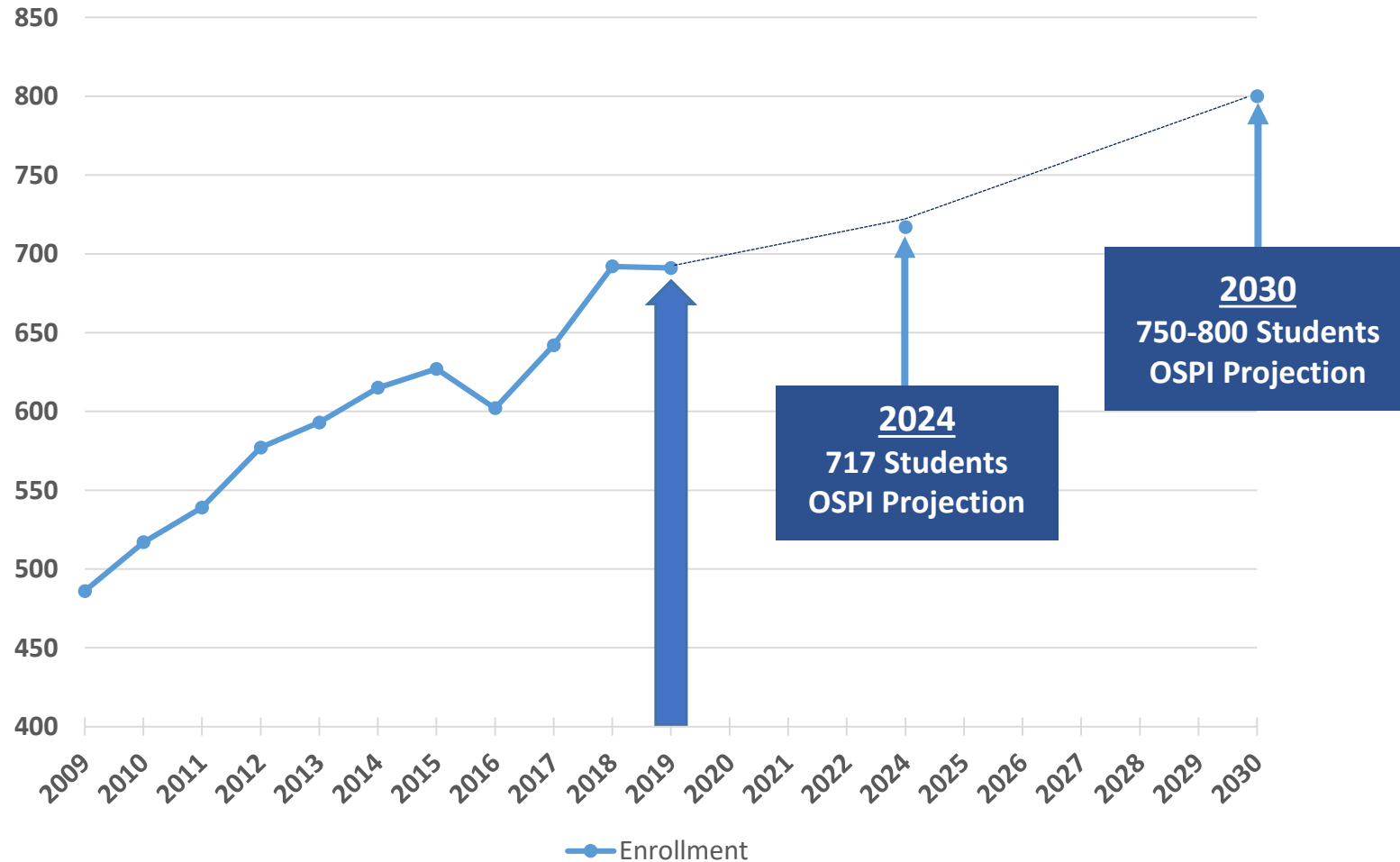
**Committee
Recommendation
\$15 million
20-year bond**

Bond Priorities: Lincoln Middle School

**LMS Current Enrollment:
691 Students**

- Built in 1963
- Designed for 350 students
- Upgraded in 2004-2005, expanded to accommodate **500-600** students.

**LMS Projected Enrollment:
2024: 717 Students
2030: 750-800 Students**



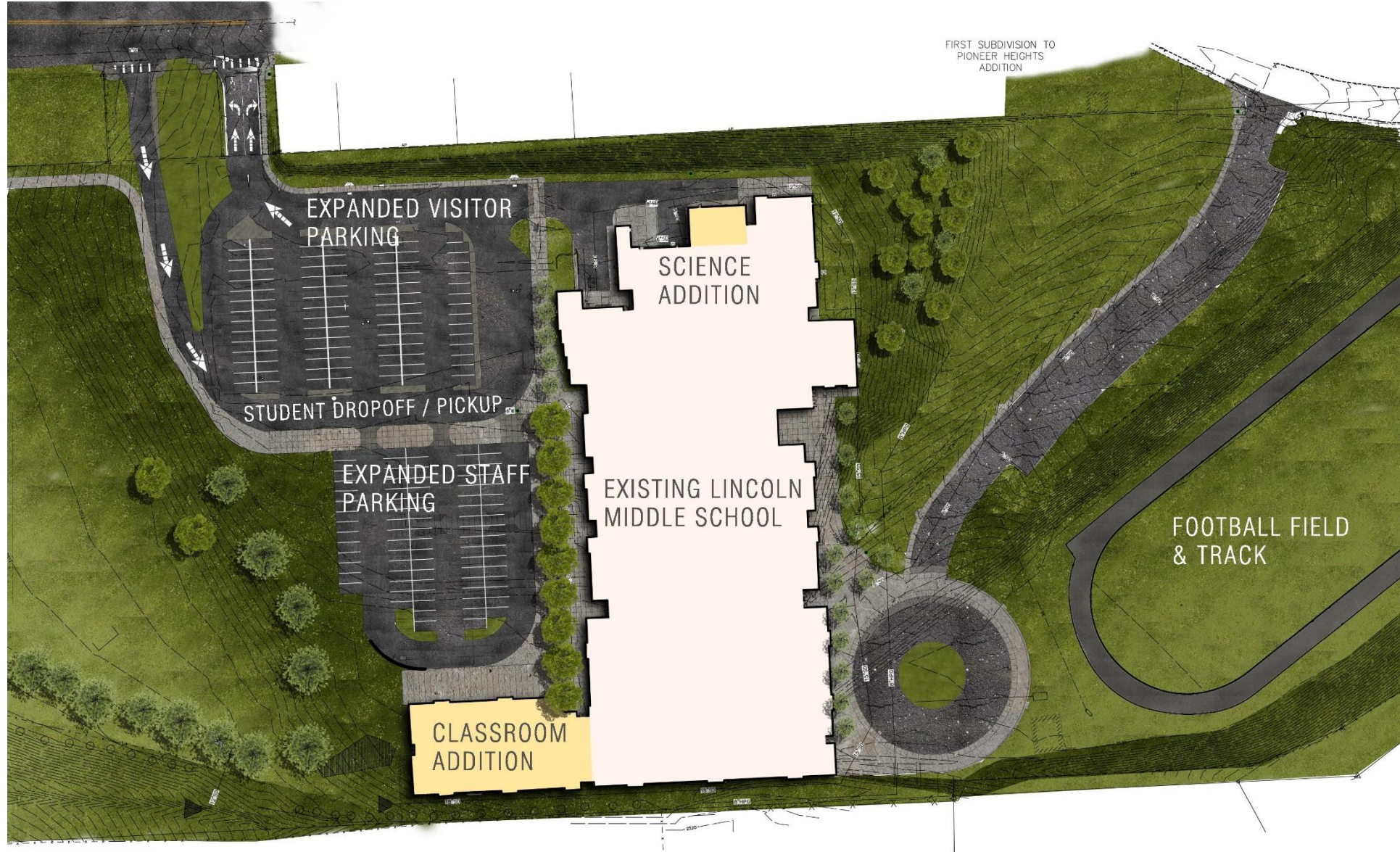
Bond Priorities: Lincoln Middle School



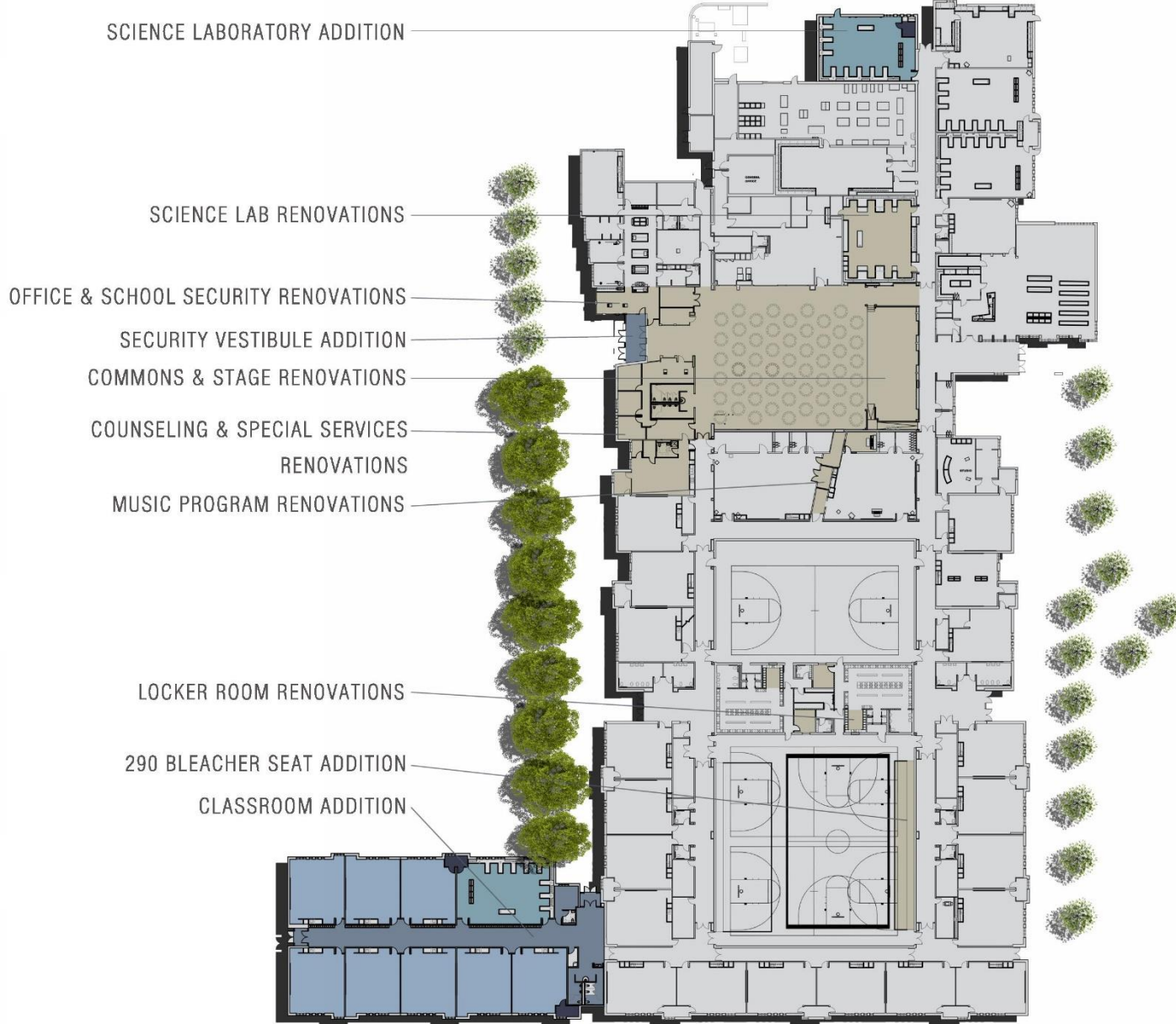
FACILITY PRIORITIES INCLUDE:

- 8 Additional Classrooms
- Enlarge Commons Space
- Add Air Conditioning/Cooling System
- New Drop-Off/Pickup Zone
- Additional Health + Science Labs
- Additional Restrooms
- Additional Security
- Replace Existing Roof
- Update Technology

LINCOLN MIDDLE SCHOOL



LINCOLN MIDDLE SCHOOL



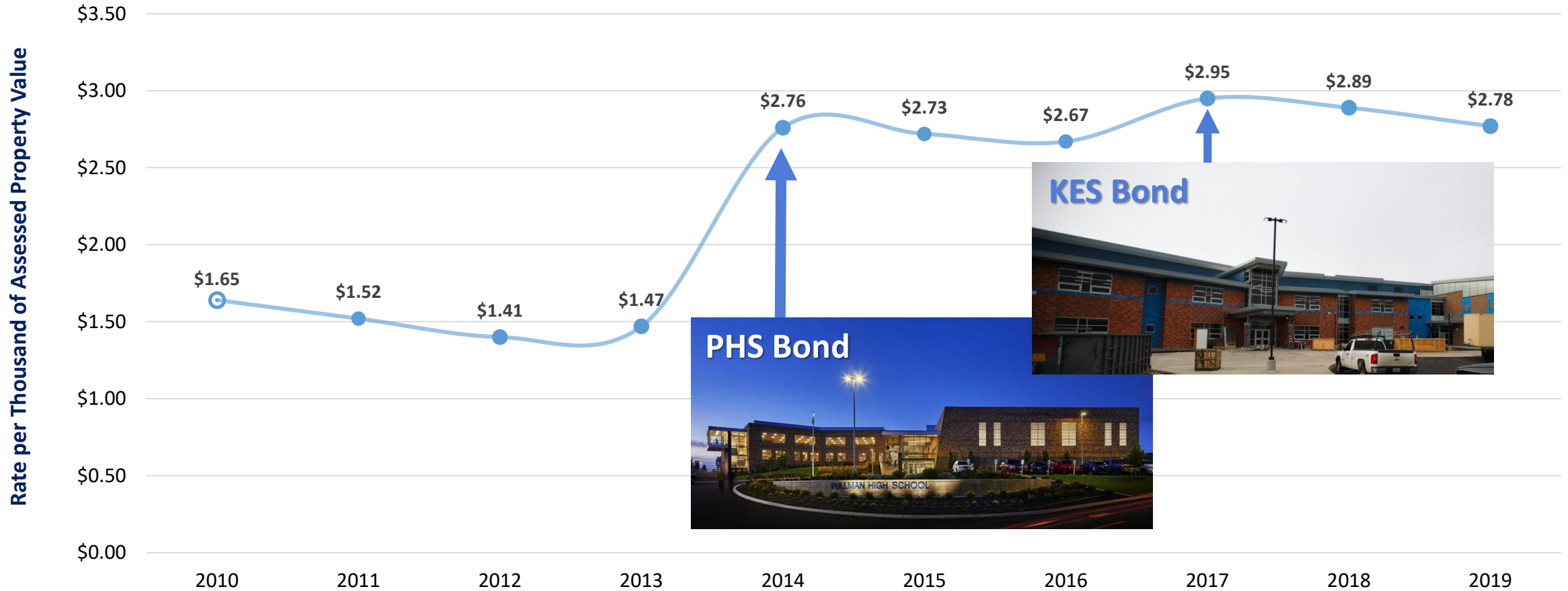
Bond Priorities: Elementary Schools

**Update
HVAC
systems for
Franklin,
Jefferson,
and
Sunnyside
Elementary
Schools**



- Pullman Public Schools are used year-round for summer school, Parks and Recreation programs, YMCA camps, and additional learning opportunities.
- Exterior windows cannot be used for ventilation when air quality is poor (e.g. fire season, harvest) or when individuals have allergies that could be life threatening.
- HVAC updates will allow for clean, cool air to enhance the learning environment for students, staff, and families throughout the year.

Bond Tax History



Actual Rate

Cost of Bond

Current Rate =
\$2.78

Proposed Rate
= \$2.78

Based on 2020
Assessed Valuation



= \$0 per year

Assessed Valuation Increases with Rates Per Thousand: Actual and Proposed

Year	Voter Approved Levy Amount	Tech Levy	Assessed Value	Assessed Value Increase	M&O Approved *RPT	M&O Actual *RPT	Tech Levy *RPT	Current Bond *RPT	Additional Proposed Bond Rate	Estimated Total
2015	\$ 5,300,000	\$ 200,000	\$ 1,850,247,047	4.26%	\$ 3.18	\$ 2.86	\$ 0.11	\$ 2.73	\$ -	\$5.70
2016	\$ 5,300,000	\$ 200,000	\$ 1,907,184,617	3.08%	\$ 3.12	\$ 2.78	\$ 0.10	\$ 2.67	\$ -	\$5.55
2017	\$ 5,300,000	\$ 200,000	\$ 2,081,776,089	9.15%	\$ 2.75	\$ 2.55	\$ 0.10	\$ 2.95	\$ -	\$5.60
2018	\$ 5,300,000	\$ 200,000	\$ 2,144,477,173	3.01%	\$ 2.70	\$ 2.47	\$ 0.09	\$ 2.89	\$ -	\$5.45
2019	\$ 5,500,000	\$ -	\$ 2,268,633,826	5.79%	\$ 2.75	\$ 2.42	\$ -	\$ 2.78	\$ -	\$5.20
2020	\$ 5,500,000	\$ -	\$ 2,445,841,577	7.81%	\$ 2.69	\$ 2.38	\$ -	\$ 2.78	\$ -	\$5.16
2021	\$ 5,300,000	\$ 200,000	\$ 2,494,758,409	2.00%	\$ 2.25	\$ 2.12	\$ 0.08	\$ 2.78	\$ 0.00	\$4.98
2022	\$ 5,300,000	\$ 200,000	\$ 2,544,653,577	2.00%	\$ 2.20	\$ 2.08	\$ 0.08	\$ 2.78	\$ 0.00	\$4.94
2023	\$ 5,300,000	\$ 200,000	\$ 2,595,546,648	2.00%	\$ 2.16	\$ 2.04	\$ 0.08	\$ 2.81	\$ 0.00	\$4.93
2024	\$ 5,300,000	\$ 200,000	\$ 2,647,457,581	2.00%	\$ 2.12	\$ 2.00	\$ 0.08	\$ 2.88	\$ 0.00	\$4.96

*RPT = Rate Per
Thousand

Average Assessed Value Increase from 2015-2019 6.03%

PROPERTY TAX EXEMPTION PROGRAM

FOR QUALIFIED SENIOR CITIZENS AND DISABLED PERSONS

QUALIFYING TAXPAYERS receive a reduction in the amount of property taxes due. The amount of the reduction is based on the applicant's income, the value of the residence, and the local levy rates.

- At least 61 years of age or older
- Own and occupy a primary residence in the State of Washington and have combined disposable income meeting threshold limits
- Retired from regular gainful employment due to a disability
- Veteran of the armed forces of the United States receiving compensation from the United States Department of Veterans Affairs Program Benefits

Reporting/Documentation Requirements:

- Completion of Application for Senior Citizen and Disabled Persons Exemption from Real Property Taxes
- Renewal required at least once every six years as determined by local assessor

https://dor.wa.gov/sites/default/files/legacy/Docs/Pubs/Prop_Tax/IncomeThres_20-24.pdf

<https://dor.wa.gov/find-taxes-rates/property-tax/senior-citizen-and-disabled-persons-exemption-and-deferred-income-thresholds>

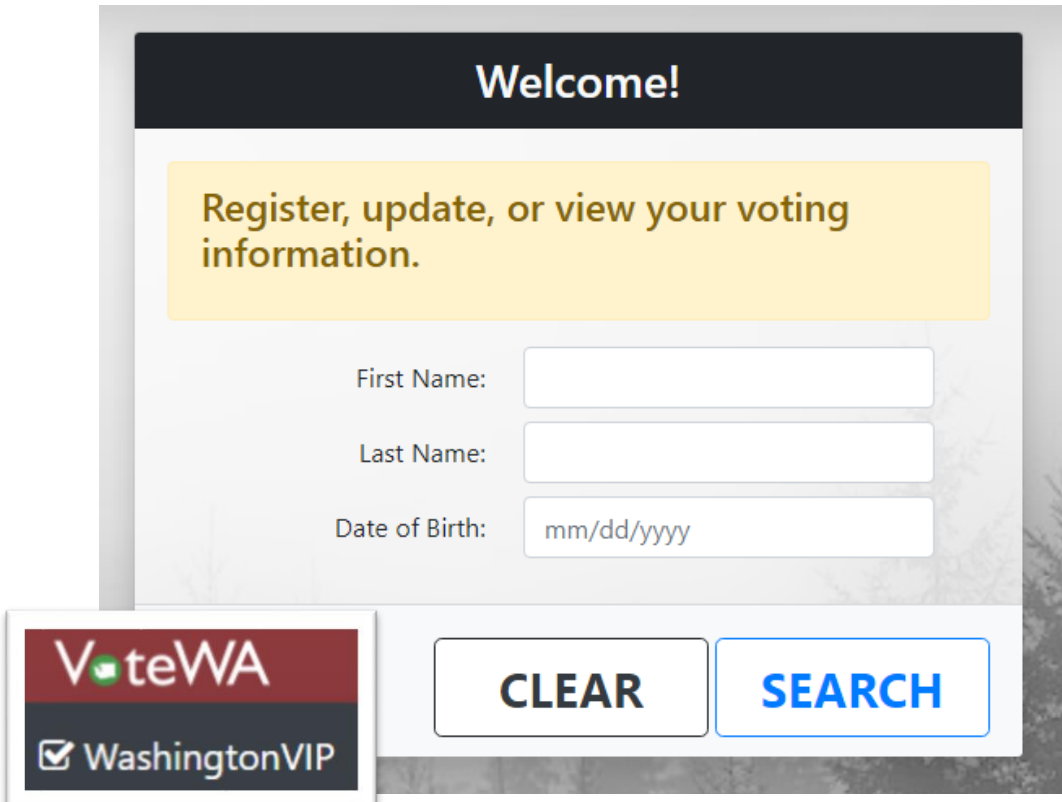
Election Day for the Pullman Public Schools 2020 Bond and Levy



February 11, 2020

PLEASE REMEMBER TO VOTE!

Check your Voter Registration Status or Register to VOTE online at: <https://voter.votewa.gov/WhereToVote.aspx>



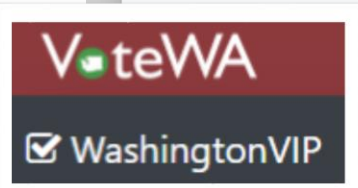
>Welcome!

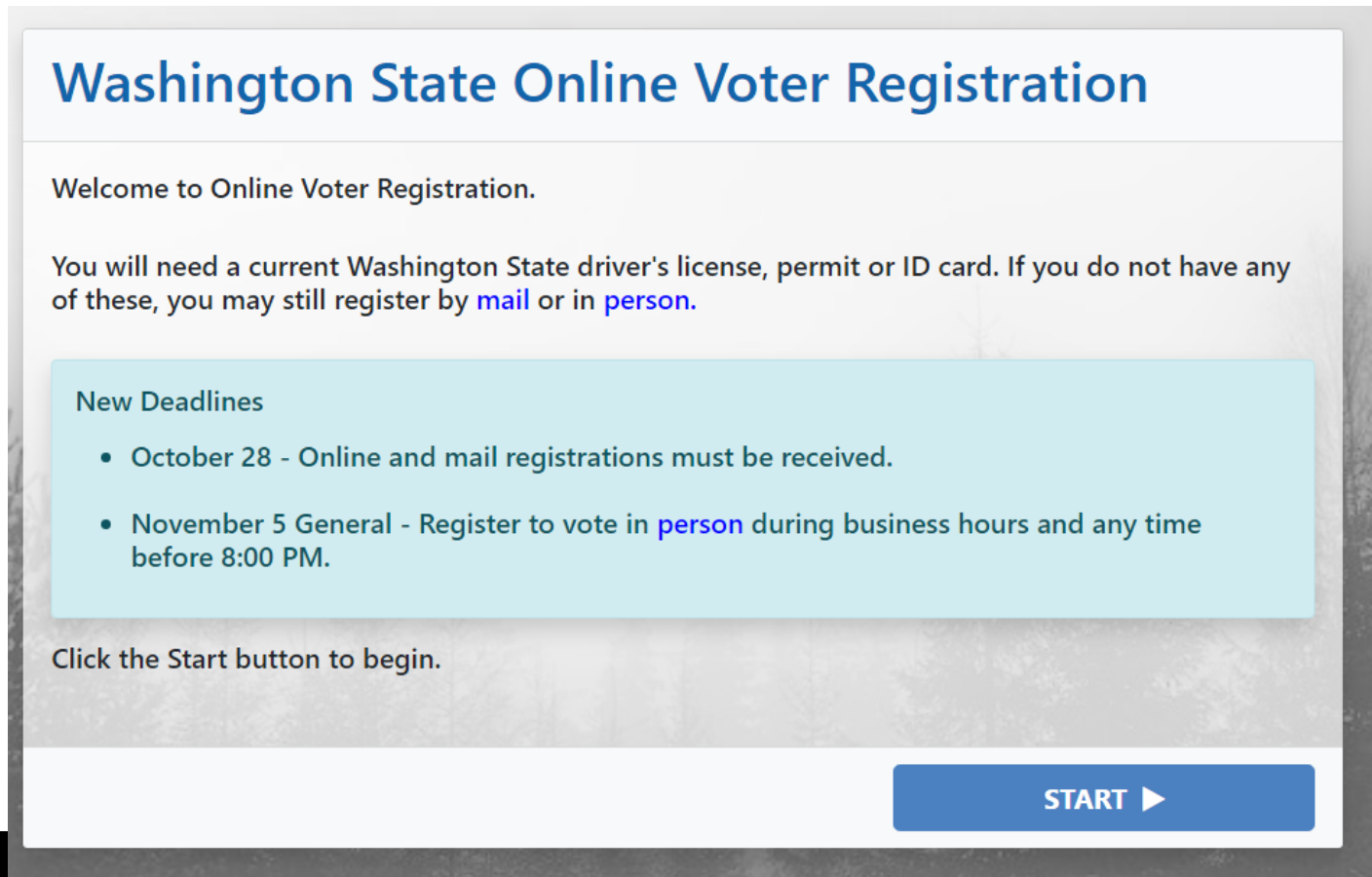
Register, update, or view your voting information.

First Name:

Last Name:

Date of Birth:

 WashingtonVIP



Washington State Online Voter Registration

Welcome to Online Voter Registration.

You will need a current Washington State driver's license, permit or ID card. If you do not have any of these, you may still register by [mail](#) or in [person](#).

New Deadlines

- October 28 - Online and mail registrations must be received.
- November 5 General - Register to vote in [person](#) during business hours and any time before 8:00 PM.

Click the Start button to begin.

To register online, you will need a current Washington State Driver's license, permit, or ID card. You may also register in person or by mail.

If you have questions or would like more information about the 2020 Bond and Levy, please visit our webpage at:

www.PullmanSchools.org/2020BondLevy



Contact us by email: bondlevyfacts@psd267.org

Contact us by phone: 509-332-3581

The Pullman School District shall provide equal educational opportunity and treatment for all students in all aspects of the academic and activities programs without regard to race, religion, creed, color, national origin, age, honorably-discharged veteran or military status, sex, sexual orientation (including gender expression or identity), marital status, the presence of any sensory, mental or physical disability, participation in the Boy Scouts of America or the use of a trained dog guide or service animal by a person with a disability. The district will provide equal access to school facilities to the Boy Scouts of America and all other designated youth groups listed in Title 36 of the United States Code as a patriotic society. District programs will be free from sexual harassment.

The following employee has been designated to handle questions and complaints of alleged discrimination: Roberta Kramer, Assistant Superintendent, Pullman School District Administrative Offices, 240 SE Dexter Street, Pullman, WA 99163, 509.332.3144. Applicants with disabilities may request reasonable accommodations in the application process by contacting the Personnel Coordinator at (509) 332-3584.

