

Highly Capable Program Information

2023/2024

Definition of “Highly Capable”

PSD recognizes the state’s definition of highly capable students as students who perform or show potential for performing at significantly advanced academic levels when compared with others of their age, experiences, or environments. Outstanding abilities are seen within students' general intellectual aptitudes, specific academic abilities, and/or creative productivities within a specific domain. These students are present not only in the general populace, but are present within all protected classes.

WAC 392-170-035

Common Characteristics of Highly Capable Children

Bright Learner

- Knows answers to questions
- Interested in learning
- Has good ideas
- Motivated by school and grades
- Likes order
- Completes assignments on time
- Can memorize well
- Grade-level sense of humor

Highly Capable Learner

- Asks questions
- Curious about learning
- Has unusual or divergent ideas
- Already knows the material
- Motivated by learning
- Likes complexity
- Initiates projects to do in class
- Can guess well
- Advanced sense of humor

When can Students be referred?

Fall Referrals

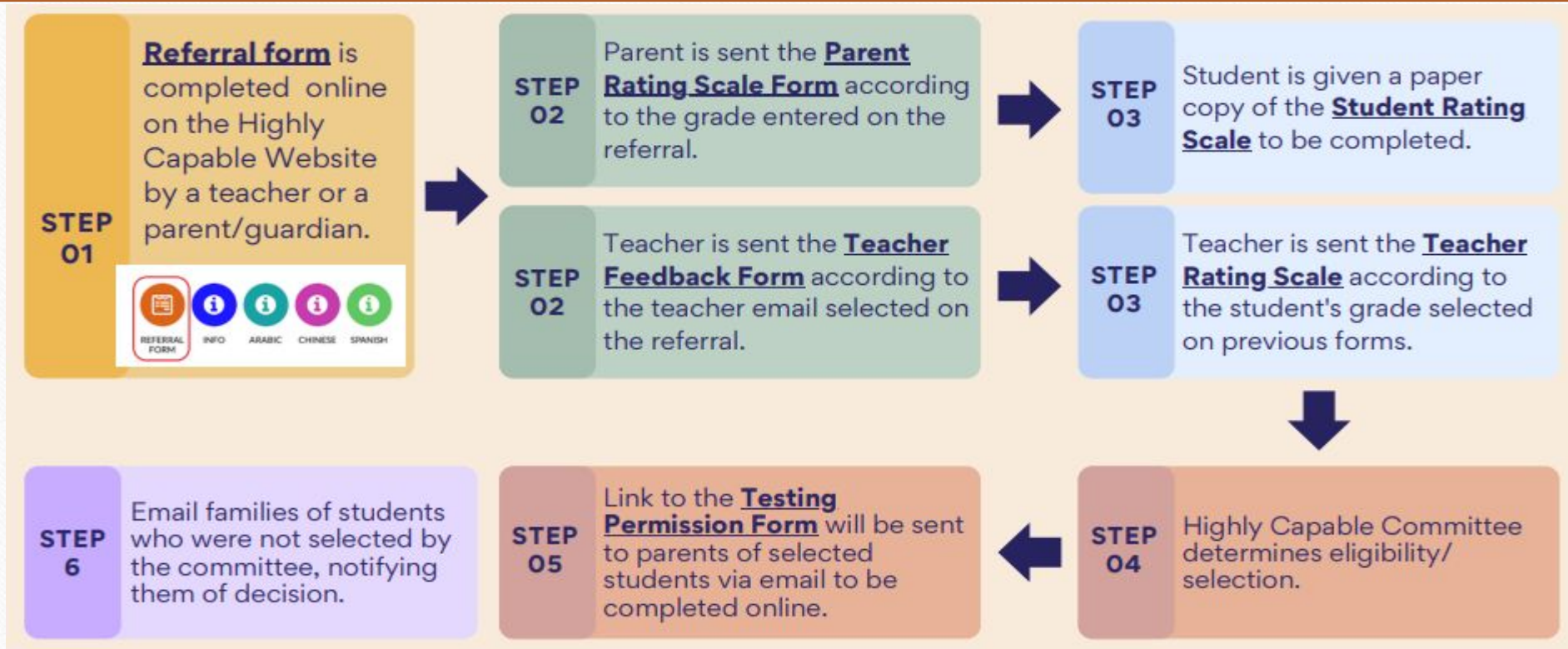
- Current kindergarten and some transfer students
- Services begin during the current school year
- Referrals accepted before and during fall conference week with a deadline of October 30, 2023

Spring Referrals

- Current K-11th grade students
- Services begin during the following school year
- Referrals accepted beginning March 4th with a final due date on March 15th (the last day of spring conferences)

Referral Process

*Students are typically referred if they score at or above the 90th percentile in both Math and Reading on MAPs (k-12) and/or at or above the 90th percentile in both math and ELA on the SBA (9-12). Although this is the norm, any student can be referred.



Referral Due Dates

Fall

October				
MON	TUE	WED	THUR	FRI
 2	3	4	5	6
 9	10	11	12	13
 16	17	18	19	20
 23	24	25	26	27
 30	31			

Final fall referral due date 10/30/23

Parent/Teacher
Conference Dates
in Yellow.

Conversations will
begin there with
the final referral
date to be shortly
after conference
week.

Spring

March				
MON	TUE	WED	THUR	FRI
				1
 4	5	6	7	8
 11	12	13	14	15
 18	19	20	21	22
 25	26	27	28	29

Final Spring referral due date to be determined

Highly Capable Online Referral Process

A quick link to a detailed description of the referral process and all necessary forms will go live for teachers and parents the week before conferences. The images to the right show you what that link will entail.

Highly Capable Automatic Referral Process

The Highly Capable referral process is now almost completely online using an Approval Workflow system.



Important Links



[Highly Capable Website](#)

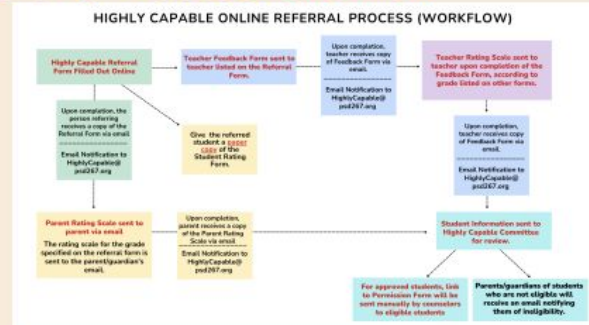


[Referral Form Link](#)



[Permission Form Link](#)

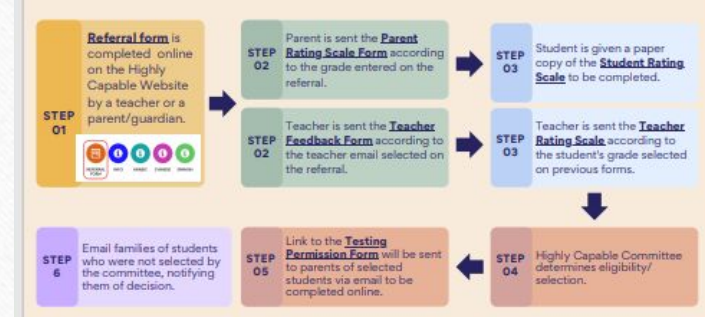
Referral Process: Overview



Referral Process: Notifications



Referral Process: Step-by-Step



Highly Capable Program Qualifications

Students who are referred for the Highly Capable Program (at or above the 90th percentile on MAPs and/or SBA in both ELA and math) and determined to be eligible for further testing by the Highly Capable Selection Committee are administered the cognitive assessment.

Grades K-11

CogAT (Cognitive Abilities Test)

- Students receive an initial screener.
- Students who score at or above the 85th percentile are administered the post screener.
- The screener and post screener are the full CogAT.

OLSAT 8 (Otis Lennon School Ability Test)

- Administered in 1 session.

Students must score at or above the 97th percentile



Thank you!

Please let me know if you have any questions or would like me to support you
in any way!

Kelli Cox

Highly Capable TOSA for the Pullman School District

kcox@psd267.org